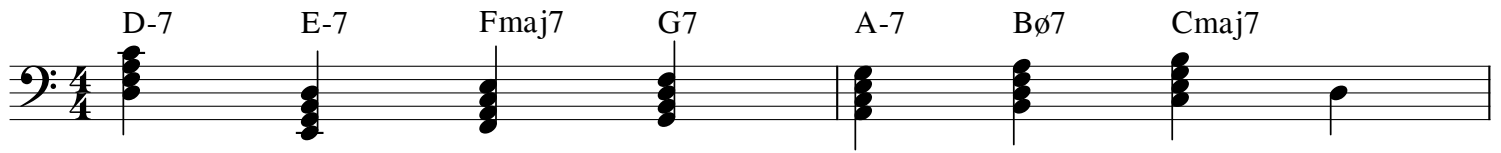


So What diatonic chords



Start from root going up



starting from second going up



starting from third going up



starting from fourth going up



starting from fifth going up



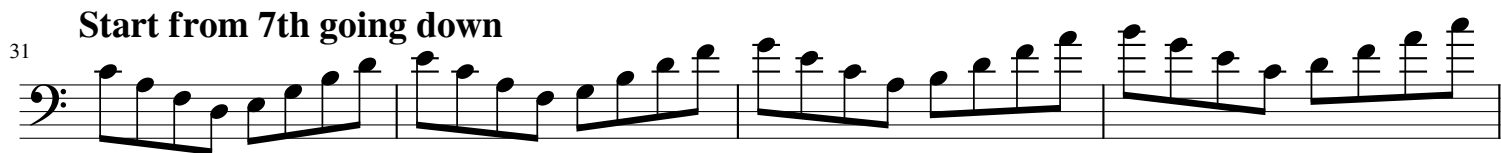
starting from sixth going up




starting from seventh going up



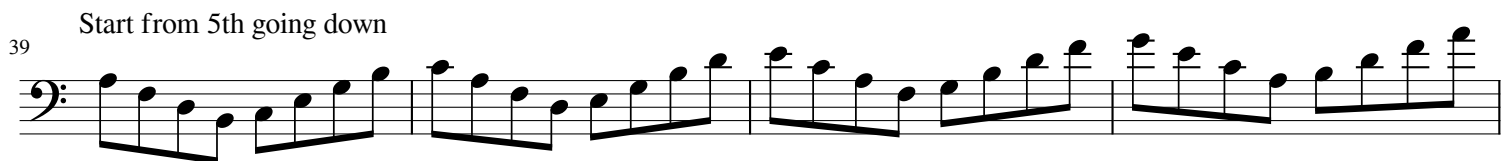
31 Start from 7th going down



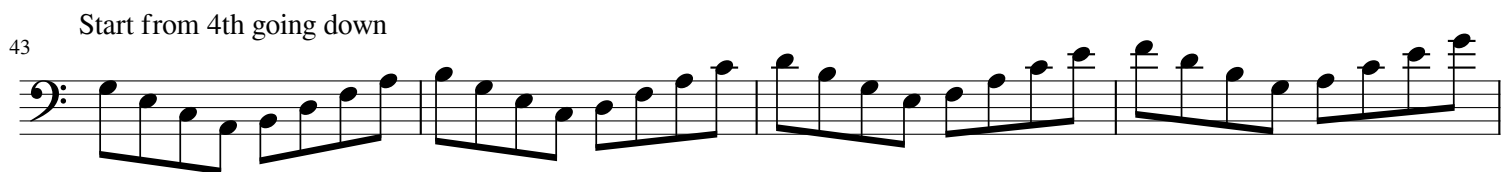
35 Start from 6th going down



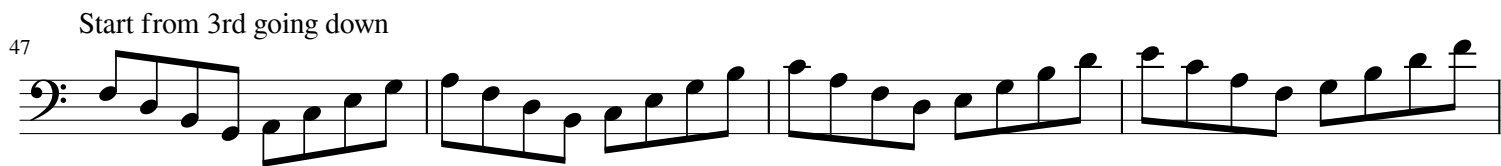
39 Start from 5th going down



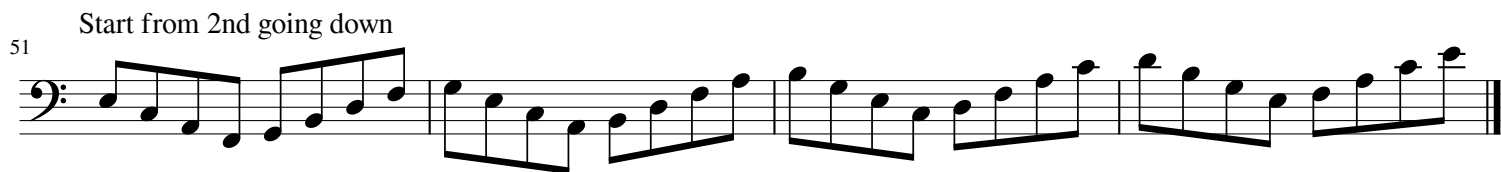
43 Start from 4th going down



47 Start from 3rd going down



51 Start from 2nd going down



Arpeggios — 2 octaves

55 Start on root

Start on 2nd

This block contains the first two staves of music. The first staff, labeled '55 Start on root', shows an ascending and descending arpeggio starting on the root note (C2) in the bass clef. The second staff, labeled 'Start on 2nd', shows an ascending and descending arpeggio starting on the second degree (D2) in the bass clef.

59 Start on 3rd

Start on 4th

This block contains the third and fourth staves of music. The third staff, labeled '59 Start on 3rd', shows an ascending and descending arpeggio starting on the third degree (E2) in the bass clef. The fourth staff, labeled 'Start on 4th', shows an ascending and descending arpeggio starting on the fourth degree (F2) in the bass clef.

63 Start on 5th

Start on 6th

This block contains the fifth and sixth staves of music. The fifth staff, labeled '63 Start on 5th', shows an ascending and descending arpeggio starting on the fifth degree (G2) in the bass clef. The sixth staff, labeled 'Start on 6th', shows an ascending and descending arpeggio starting on the sixth degree (A2) in the bass clef.

67 Start on 7th

This block contains the seventh staff of music. The seventh staff, labeled '67 Start on 7th', shows an ascending and descending arpeggio starting on the seventh degree (B2) in the bass clef. The staff concludes with a double bar line and a key signature change to three flats (B-flat, E-flat, A-flat).

69

E \flat -7 F-7 G \flat maj7 A \flat 7 B \flat -7 C \emptyset 7 D \flat maj7

Start from root going up

71

starting from second going up

75

starting from third going up

79

starting from fourth going up

83

starting from fifth going up

87

starting from sixth going up

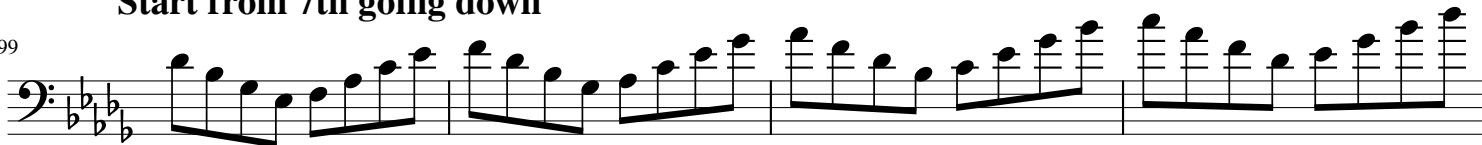
91

starting from seventh going up

95

Start from 7th going down

99



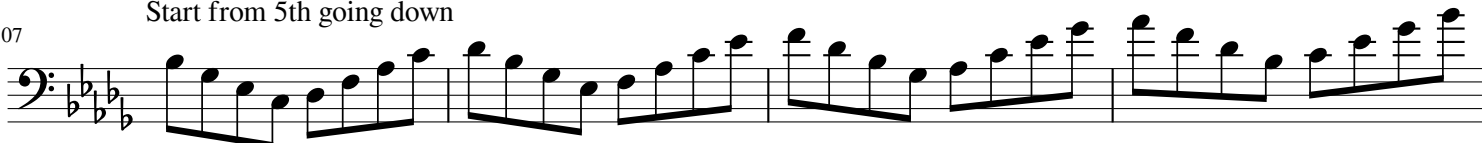
Start from 6th going down

103



Start from 5th going down

107



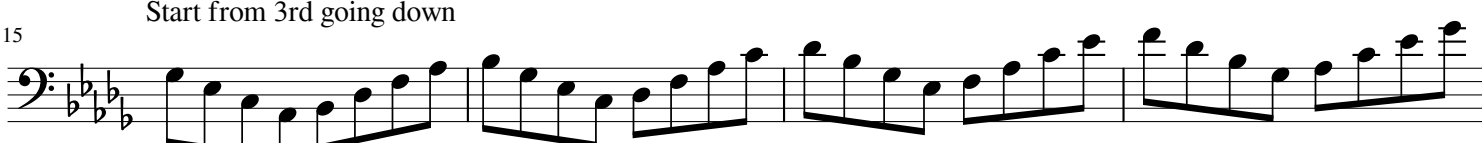
Start from 4th going down

111



Start from 3rd going down

115



Start from 2nd going down

119



Arpeggios — 2 octaves

123 Start on root Start on 2nd

127 Start on 3rd Start on 4th

131 Start on 5th Start on 6th

135 Start on 7th

The image displays four staves of musical notation in bass clef, each containing two measures of arpeggiated chords. The key signature consists of three flats (B-flat, E-flat, A-flat). The first staff (measures 123-126) shows arpeggios starting on the root and the 2nd degree. The second staff (measures 127-130) shows arpeggios starting on the 3rd and 4th degrees. The third staff (measures 131-134) shows arpeggios starting on the 5th and 6th degrees. The fourth staff (measures 135-138) shows arpeggios starting on the 7th degree. Each measure contains a sequence of eighth notes forming the arpeggio, with a final half note. The notation includes ledger lines for notes below the staff and above the staff to indicate the two-octave range.